



ProNordic

ART.NO. 118655

EN

INSTALLATION INSTRUCTIONS

Heating battery, electrical



A document with more information about the ventilation unit is supplied with each product or can be downloaded from Flexit's website: www.flexit.com

Our products are subject to continuous development and we therefore reserve the right to make changes. We also disclaim liability for any printing errors that may occur.

Contents

1. Installing an electrical heating battery.....6

2. S300R, L310R, L350R.....7

3. Configuration 10

Symbols



DANGER! When a text box is this colour, it means that a life-threatening or serious personal injury may be the consequence of not following the instructions.



NOTICE! When a text box is this colour, it means that a poor utilisation ratio or product operating issues may be the consequence of not following the instructions.



CAUTION! When a text box is this colour, it means that material damage may be the consequence of not following the instructions.



INFO! When a text box is this colour, it means that it contains important information.



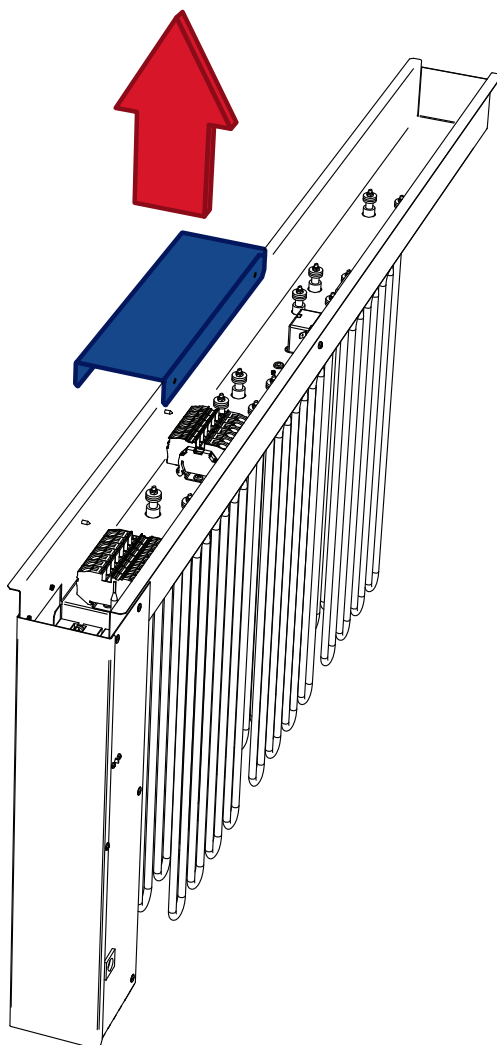
SAFETY INSTRUCTION



- To avoid the risk of fire, electric shock or injury, read all the safety instructions and warning texts before using the unit.
- All electrical connections must be carried out by qualified electricians.
- If the power lead is damaged, it must be replaced by the manufacturer, the manufacturer's service agent or a similarly qualified person.
- The unit must not be used to extract combustible or flammable gases.
- It is the installer's responsibility to carry out a full safety and function assessment of the appliance.
- All electrical power to the unit must be shut off before carrying out service or maintenance, including cleaning:
 1. Switch off the unit in the following menu on the handheld terminal:
'Start page > SWITCHOVER SERVICE > OFF'
 2. Wait until the unit has stopped.
 3. Switch off the all-pole switch.

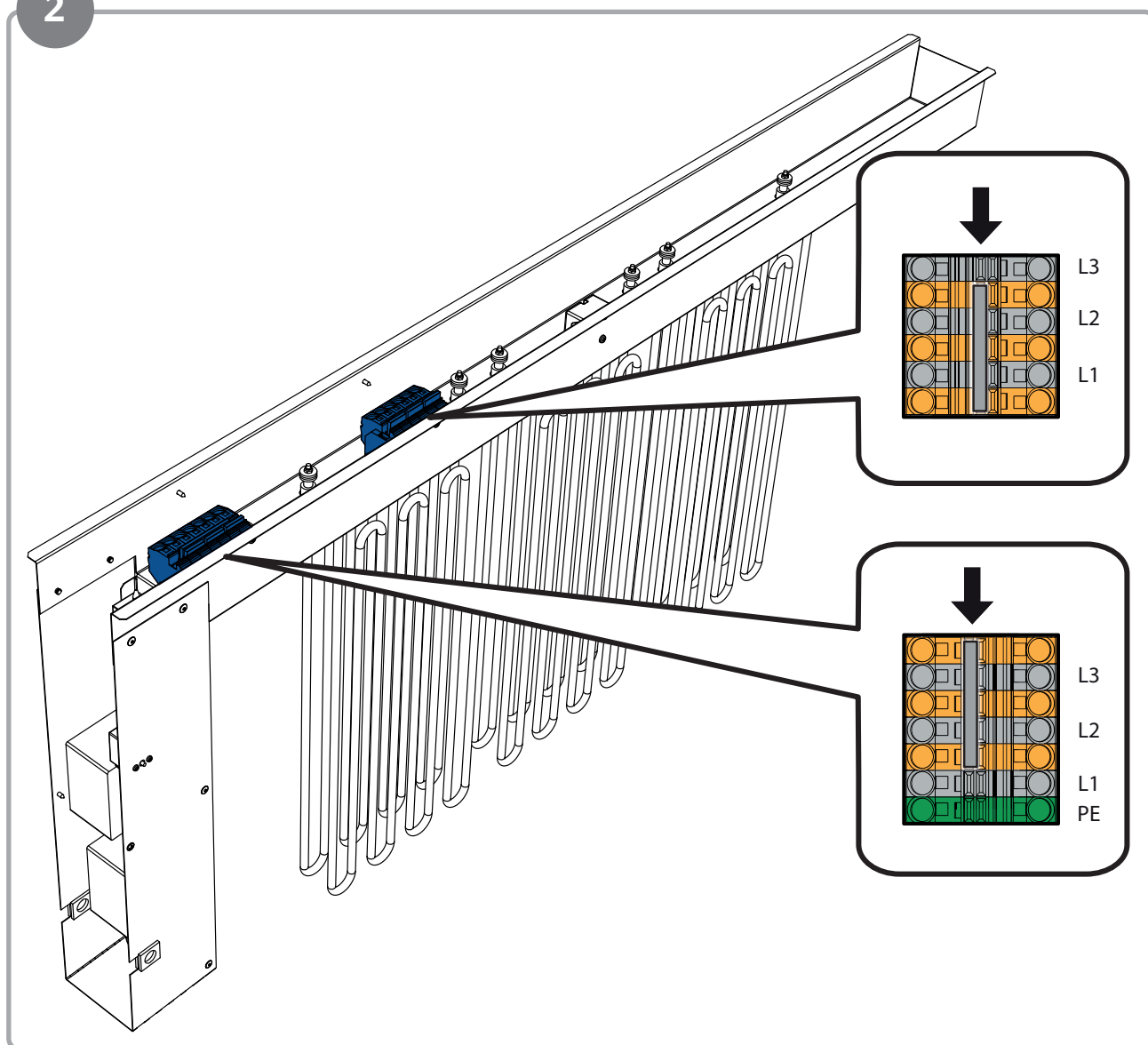
1. Installing an electrical heating battery

1



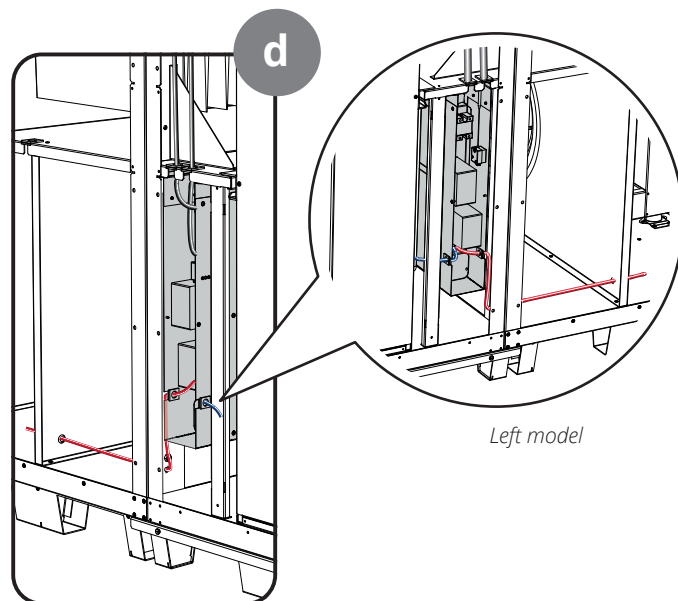
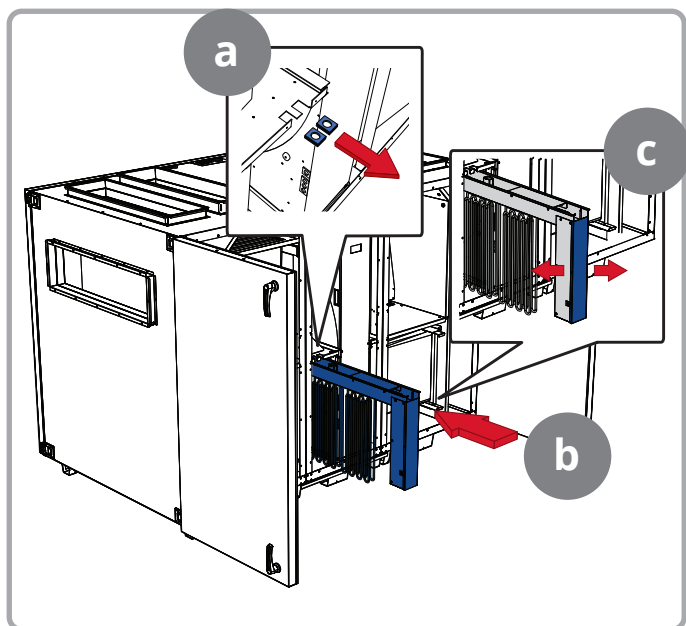
2. S300R, L310R, L350R

2



3N~400 V
Fit the supplied long
cam clip as shown.
(2pcs)

3

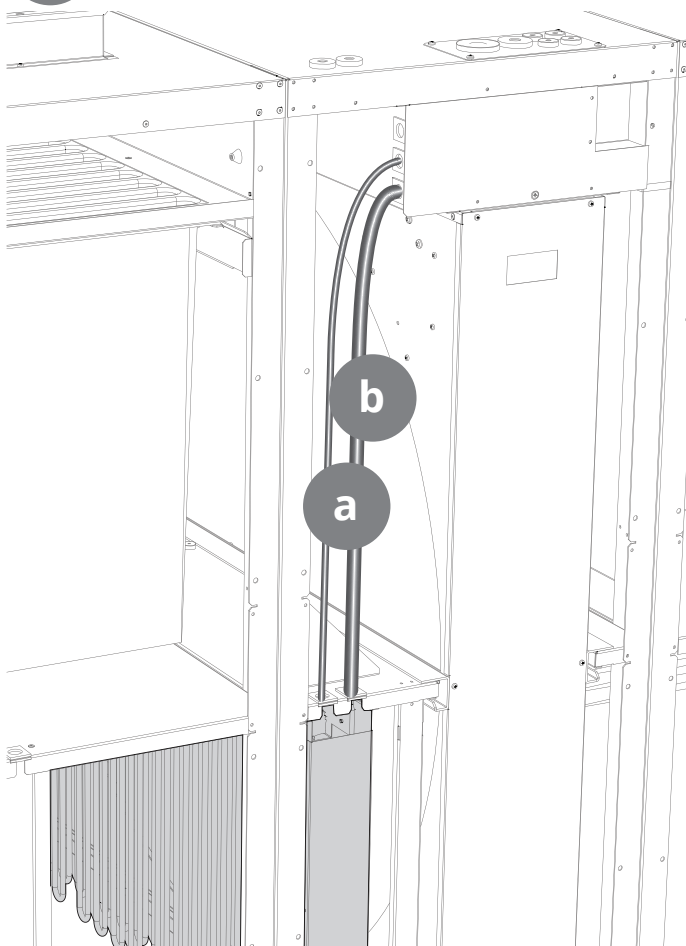


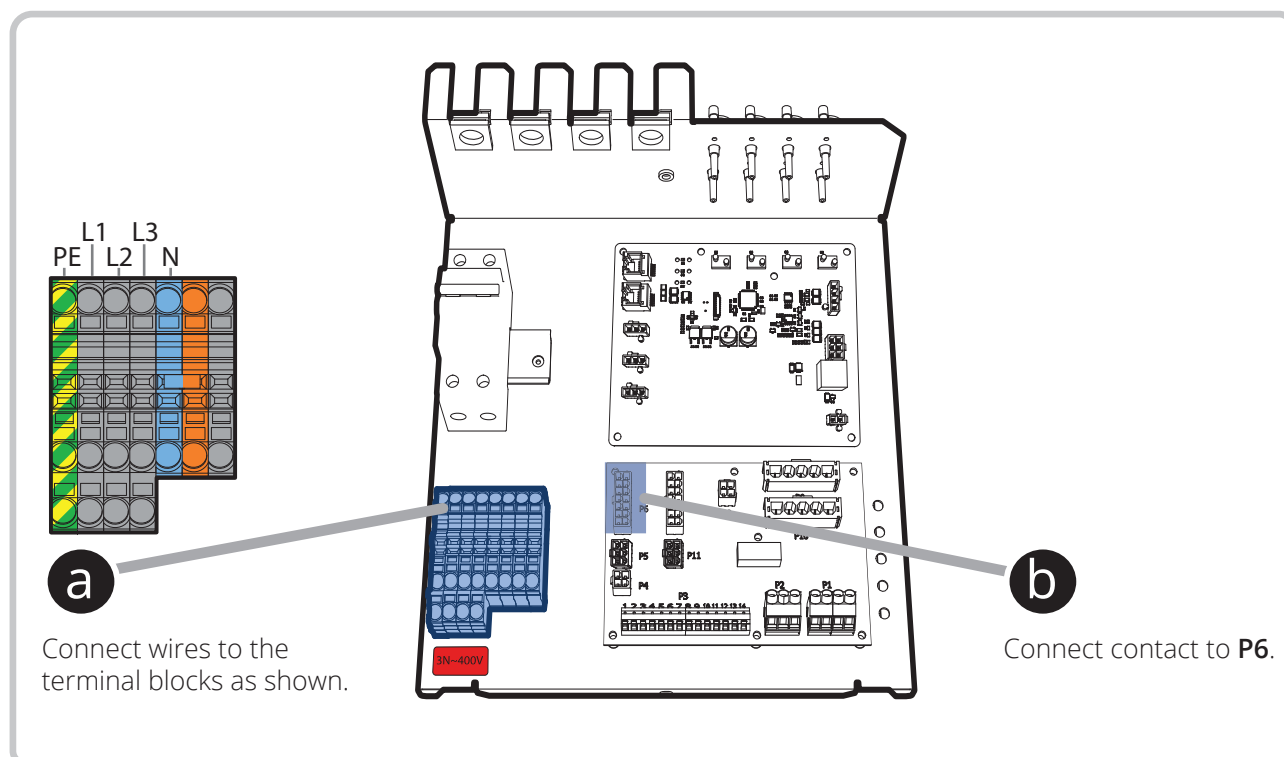
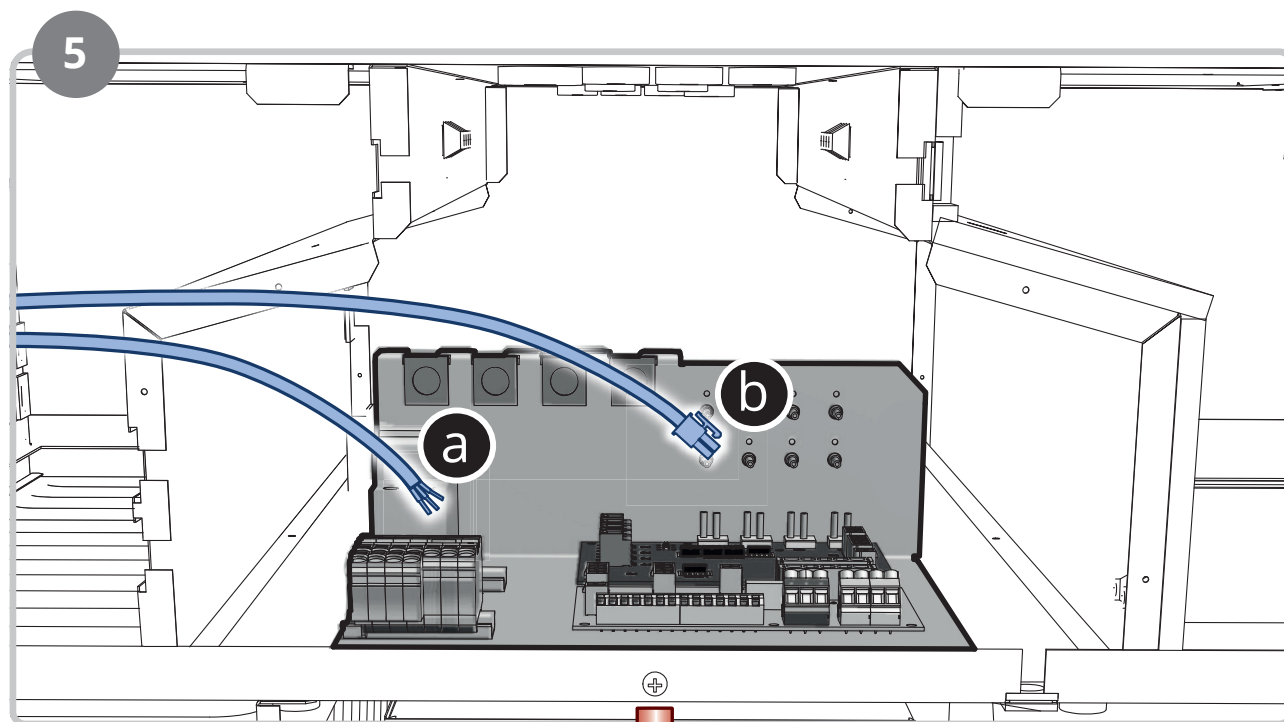
Left model



CAUTION! Red pressure hose should always go into the fan section.

4





INFO! Refer to wiring diagram 118540 for more information.

3. Configuration

Proceed as follows with the handheld terminal to configure the unit for the electric heating coil:

Press and hold the menu wheel until the login menu appears. Log in with the password 2000. Then go to:

Start page > Quick menu > Commissioning > Config. After Heater > Type of heating > Electric heating

After making a change, a restart is required.

Start page > Quick menu > Commissioning > Config. After Heater > Restart required! > Execute



Now the battery is unconfigured and the second electrical step must be activated.

Start page > Main menu > Configuration > Configuration 2 > Electrical heater 2 Pos = Yes

Start page > Main menu > Configuration > Configuration 2 > Restart requierd > Execute





Flexit AS, Moseveien 8, N-1870 Ørje
www.flexit.com