



Flexit GO

NO **VEILEDNING**
Ekstern BACnet-kommunikasjon

SV **ANVISNING**
Extern BACnet-kommunikation

DA **VEJLEDNING**
Ekstern BACnet-kommunikation

FI **OHJE**
Ulkoinen BACnet-tiedonsiirto

EN **INSTRUCITON**
External BACnet communication

NO Innhold

| | | |
|-----|---|----|
| 1. | Om BACnet..... | 4 |
| 2. | Koble til enheten | 4 |
| 3. | Konfigurasjon | 4 |
| 4. | Lese/skrive verdier til enheten | 4 |
| 5. | BACnet standardized device profile (Annex L) | 9 |
| 6. | BACnet interoperability building blocks supported (Annex K) | 9 |
| 7. | Standard object types supported..... | 11 |
| 8. | Segmentation capability..... | 17 |
| 9. | Data Link Layer options..... | 18 |
| 10. | Device address binding | 18 |
| 11. | Networking options | 18 |
| 12. | Character sets supported..... | 18 |

SV Innehåll

| | | |
|-----|---|----|
| 1. | Om BACnet..... | 5 |
| 2. | Ansluta till enheten | 5 |
| 3. | Konfiguration | 5 |
| 4. | Läsa/skriva värden till enheten | 5 |
| 5. | BACnet standardized device profile (Annex L) | 9 |
| 6. | BACnet interoperability building blocks supported (Annex K) | 9 |
| 7. | Standard object types supported..... | 11 |
| 8. | Segmentation capability..... | 17 |
| 9. | Data Link Layer options..... | 18 |
| 10. | Device address binding | 18 |
| 11. | Networking options | 18 |
| 12. | Character sets supported..... | 18 |

DA Indhold

| | | |
|-----|---|----|
| 1. | Om BACnet..... | 6 |
| 2. | Tilslutning af enheden | 6 |
| 3. | Konfiguration | 6 |
| 4. | Læse-/skriveværdier til enheden..... | 6 |
| 5. | BACnet standardized device profile (Annex L) | 9 |
| 6. | BACnet interoperability building blocks supported (Annex K) | 9 |
| 7. | Standard object types supported..... | 11 |
| 8. | Segmentation capability..... | 17 |
| 9. | Data Link Layer options..... | 18 |
| 10. | Device address binding | 18 |
| 11. | Networking options | 18 |
| 12. | Character sets supported..... | 18 |

FI Sisällys

| | | |
|-----|---|----|
| 1. | Tietoja BACnet-protokollasta | 7 |
| 2. | Liittäminen yksikköön..... | 7 |
| 3. | Kokoonpano..... | 7 |
| 4. | Lukee arvot yksiköstä / kirjoittaa arvot yksikköön | 7 |
| 5. | BACnet standardized device profile (Annex L) | 9 |
| 6. | BACnet interoperability building blocks supported (Annex K) | 9 |
| 7. | Standard object types supported..... | 11 |
| 8. | Segmentation capability..... | 17 |
| 9. | Data Link Layer options..... | 18 |
| 10. | Device address binding | 18 |
| 11. | Networking options | 18 |
| 12. | Character sets supported..... | 18 |

EN Contents

| | | |
|-----|---|----|
| 1. | About BACnet | 8 |
| 2. | Connecting to the unit..... | 8 |
| 3. | Configuration..... | 8 |
| 4. | Read/write values to the unit..... | 8 |
| 5. | BACnet standardized device profile (Annex L) | 9 |
| 6. | BACnet interoperability building blocks supported (Annex K) | 9 |
| 7. | Standard object types supported..... | 11 |
| 8. | Segmentation capability..... | 17 |
| 9. | Data Link Layer options..... | 18 |
| 10. | Device address binding | 18 |
| 11. | Networking options | 18 |
| 12. | Character sets supported..... | 18 |

NO *Våre produkter er i kontinuerlig utvikling og vi forbeholder oss derfor retten til endringer. Vi tar også forbehold om eventuelle trykkfeil som måtte oppstå.*

SV *Våra produkter utvecklas ständigt och vi förbehåller oss därför rätten till ändringar. Vi tar inte heller ansvar för eventuella feltryck.*

DA *Vores produkter udvikles løbende, og vi forbeholder os derfor retten til ændringer. Vi tager ligeledes forbehold for eventuelle trykfejl, som måtte forekomme.*

FI *Tuotteitamme kehitetään jatkuvasti. Sen vuoksi pidätämme oikeuden muutoksiin. Emme myöskään vastaa mahdollisista painovirheistä.*

EN *Our products are subject to continuous development and we therefore reserve the right to make changes. We also disclaim liability for any printing errors that may occur.*

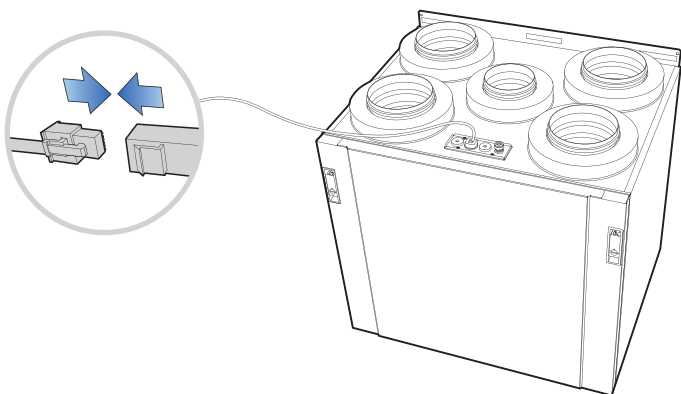
1. Om BACnet

BACnet (Building Automation and Controls network) er utviklet av ASHRAE (American Society of Heating, Refrigerating, and Air-Conditioning Engineers). BACnet er en global ISO-standard, nasjonal standard i USA, europeisk prestandard og brukes i over 30 land. BACnet er en datakommunikasjonsprotokoll eller et sett kommunikasjonsregler som ASHRAE utviklet for å standardisere kommunikasjonen mellom komponenter i byggautomasjonssystemer. BACnet gjør det mulig for systemer fra forskjellige leverandører, som VVS-, belysnings, sikkerhets- og brannsystemer å kommunisere med hverandre ved hjelp av standardiserte metoder for å presentere, anmode om, tolke og transportere informasjon.

Flexit Nordic og EcoNordic-seriene har BACnet IP som standard.

| | |
|-----------------------------------|---|
| Dato: | 3. mars 2020 |
| Leverandørnavn: | Siemens Building Products (leverandør-ID 7) |
| Produktnavn: | S300 |
| Produktmodellnummer: | POS3.6715 |
| BACnet-protokollversjon: | Revisjon1.14 |
| Applikasjonsprogramvareversjon | AAS-20:SU=SiUn;APT=HvacFnc-t21y_A;APTV=2.419 og høyere; 20:SU=SiUn;APT=HvacFnc-t21y_A;APTV=2.419 og høyere; |
| Firmware-revisjon FW=03.39.02.25: | FW=03.39.02.25: BL=00.05.02.0003; SVS-300.4: SBC=13.24 |

2. Koble til enheten



Koble ethernet-kabelen øverst på produktet til nettverket i bygningen.

3. Konfigurasjon

| Parameter | Standardverdi |
|-----------|---------------|
| Enhets-ID | 2 |

For å endre BACnet-innstillingene, må produktet kobles til et lokalt nettverk. Sørg for at mobilen/nettbrettet er tilkoblet samme lokale nettverk og åpne Flexit GO-appen. Koble til produktet som installatør (1000) og gå til Annet> Installatør> BACnet-innstillinger. Her kan du endre BACnet-innstillingene. Produktet starter på nytt for å gjennomføre endringene.

4. Lese/skrive verdier til enheten

BACnet-objekter er oppført i et separat dokument som kalles "BACnet list"

Lese verdier:

Ingen restriksjoner.

Skrive verdier:

For objekter som har prioritetsordninger, bruk **prio 13** for å skrive.



ADVARSEL! Skriv aldri verdien i en annen prioritet enn 13. Det kan føre til at du mister kontrollen over enheten.



INFO! Veiledningen er inndelt i fem ulike språk for kapittel 1-4. Gå nå videre til side 9 hvor du finner kapittel 5.

1. Om BACnet

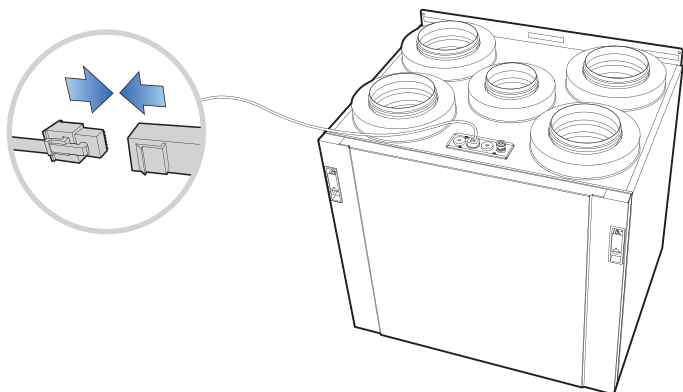
BACnet (nätverk för byggnadsautomation och styrning) utvecklades av ASHRAE (American Society of Heating, Refrigerating, and Air-Conditioning Engineers). BACnet är en global ISO-standard, amerikansk nationell standard och europeisk förstandard och används i mer än 30 länder.

BACnet är ett datakommunikationsprotokoll eller en uppsättning kommunikationsregler som ASHRAE skapade för att standardisera kommunikation mellan komponenter i byggnadsautomationssystem. BACnet gör det möjligt för system från olika leverantörer, som HVAC, belysnings-, säkerhets- och brandsystem, att kommunicera med varandra genom att tillhandahålla standardiserade metoder för att presentera, begära, tolka och transportera information.

Flexit Nordic- och EcoNordic-serierna är utrustade med BACnet IP som standard.

| | |
|--|--|
| Datum: | 3 mars 2020 |
| Leverantörsnamn: | Siemens Building Products (leverantörs-ID 7) |
| Produktnamn: | S300 |
| Produktmodellnummer: | POS3.6715 |
| BACnet-protokollversion: | Revision1.14 |
| Applikationsprogramvarans version: | AAS-20:SU=SiUn;APT=HvacFnc-t21y_A;APTV=2.419 och högre; 20:SU=SiUn;APT=HvacFnc-t21y_A;APTV=2.419 och högre; |
| Revision för inbyggd programvara FW=03.39.02.25: | FW=03.39.02.25: BL=00.05.02.0003; SVS-300.4: SBC=13.24 |

2. Ansluta till enheten



Anslut Ethernet-kabeln längst upp på produkten till nätverket i byggnaden.

3. Konfiguration

| Parameter | Standardvärde |
|-----------|---------------|
| Enhets-ID | 2 |

För att ändra BACnet-inställningarna måste produkten anslutas till ett lokalt nätverk. Se till att du är ansluten till samma lokala nätverk med din mobil/surfplatta och starta Flexit Go-appen. Anslut till produkten som installerare (1000) och navigera till Övrigt > Installerare > BACnet-inställningar. Här kan du ändra BACnet-inställningarna. Produkten startar om för att ändringarna ska genomföras.

4. Läs/skriva värden till enheten

BACnet-objekt anges i ett separat dokument som kallas "BACnet list"

Läs värden:
Inga restriktioner.

Skriva värden:
För objekt som har prioritetsmatriser ska endast **prio 13** användas för att skriva.



WARNING! Skriv aldrig värden i en annan prioritet än 13. Om det görs kan kontrollen över enheten förloras.



INFO! Manualen är indelad i fem olika språk för avsnitt 1-4. Gå nu vidare till sida 9 där du hittar avsnitt 5.

1. Om BACnet

BACnet (Building Automation and Controls network) er udviklet af ASHRAE (American Society of Heating, Refrigerating, and Air-Conditioning Engineers). BACnet er en global ISO-standard, amerikansk national standard og europæisk præstandard, som anvendes i mere end 30 lande.

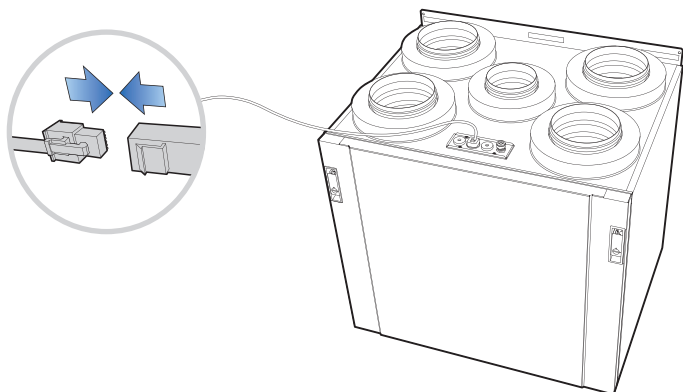
BACnet er en datakommunikationsprotokol eller et sæt kommunikationsregler, som ASHRAE har udviklet for at standardisere kommunikationen mellem komponenter i bygningsautomatiseringssystemer.

BACnet gør det muligt for systemer fra forskellige leverandører, såsom HVAC-, belysnings-, sikkerheds- og brandsystemer at kommunikere med hinanden ved hjælp af standardiserede metoder til præsentation, anmodning, fortolkning og transport af oplysninger.

Flexit Nordic- og EcoNordic-serierne er som standard forsynet med BACnet IP.

| | |
|----------------------------------|---|
| Dato: | 03. mar. 2020 |
| Leverandørnavn: | Siemens Building Products (leverandør-id 7) |
| Produktnavn: | S300 |
| Produktmodelnummer: | POS3.6715 |
| BACnet-protokolversion: | Revision1.14 |
| Applikationens software-version: | AAS-20:SU=SiUn;APT=HvacFnc-t21y_A;APTV=2.419 og højere, 20:SU=SiUn;APT=HvacFnc-t21y_A;APTV=2.419 og højere, |
| Firmwarerevision FW=03.39.02.25: | FW=03.39.02.25: BL=00.05.02.0003; SVS-300.4: SBC=13.24 |

2. Tilslutning af enheden



Tilslut Ethernet-kablet oven på produktet til netværket i bygningen.

3. Konfiguration

| Parameter | Standardværdi |
|-----------|---------------|
| Enheds-id | 2 |

Ændring af BACnet-indstillingerne kræver, at produktet er tilsluttet et lokalt netværk. Sørg for, at din mobil/tablet er tilsluttet det samme lokale netværk, og åbn Flexit GO-appen. Opret forbindelse til produktet som installatør (1000), og gå til Andet> Installatør> BACnet-indstillinger. Herfra er det muligt at ændre BACnet-indstillingerne. Produktet genstarter for at implementere ændringerne.

4. Læse-/skriveværdier til enheden

BACnet-objekterne er angivet separat dokument kaldet "BACnet list"

Læseværdier:

Ingen restriktioner.

Skriveværdier:

Anvend kun **prio 13** til skrivning til objekter med prioriterede systemer.



FORSIGTIG! Skriv aldrig værdier med andre prioriteter end 13. Dette kan medføre tab af kontrol over enheden.



INFO! Instruktionerne er opdelt i fem forskellige sprog i kapitel 1-4. Fortsæt til kapitel 5 på side 9.

1. Tietoja BACnet-protokollasta

BACnet (Building Automation and Controls network) on Amerikan LVI-insinöörien liiton (American Society of Heating, Refrigerating, and Air-Conditioning Engineers - ASHRAE) kehittämä tiedonsiirtoprotokolla. BACnet on maailmanlaajuinen ISO-standardi, Amerikan kansallinen standardi ja eurooppalainen esistandardi, joka on käytössä yli 30 maassa.

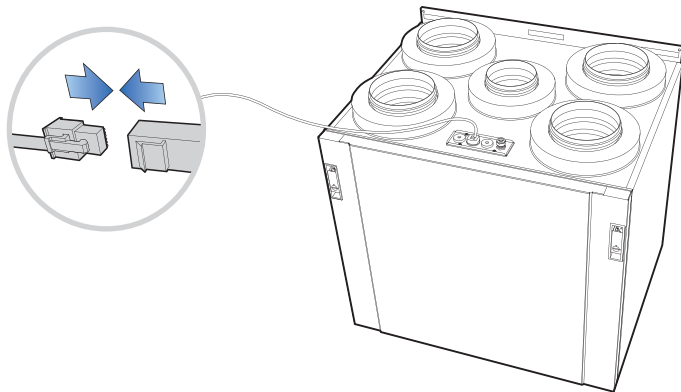
BACnet on tiedonsiirtoprotokolla, eli joukko tiedonsiirtoa koskevia sääntöjä, jotka ASHRAE on luonut rakennusautomaatiojärjestelmän komponenttien välisen tiedonsiirron standardoimiseksi.

BACnetin avulla eri toimittajien järjestelmät, kuten LVI-, valaistus-, turva- ja palojärjestelmät, voivat kommunikoida keskenään BACnetin tarjotessa standardoituja menetelmiä tietojen esittämiseen, pyytämiseen, tulkintaan ja siirtämiseen.

Flexit Nordic- ja EcoNordic -sarjoissa on mukana vakiona BACnet IP.

| | |
|---|--|
| Päiväys: | 3.3.2020 |
| Myyjän nimi: | Siemens Building Products (Vendor ID 7) |
| Tuotteen nimi: | S300 |
| Tuotteen mallinumero: | POS3.6715 |
| BACnet-protokollan versio: | Revisio 1.14 |
| Sovellusohjelmiston versio: | AAS-20:SU=SiUn;APT=HvacFnc-t21y_A;APTV=2.419 ja myöhempi; 20:SU=SiUn;APT=HvacFnc-t21y_A;APTV=2.419 ja myöhempi; |
| Laitteohjelmiston revisio FW=03.39.02.25: | FW=03.39.02.25; BL=00.05.02.0003; SVS-300.4; SBC=13.24 |

2. Liittäminen yksikköön



Kytke laitteen päällä oleva Ethernet-kaapeli rakennuksen verkkoon.

3. Kokoonpano

| Parametri | Oletusarvo |
|-------------|------------|
| Laitetunnus | 2 |

BACnet-asetusten muuttaminen edellyttää, että laite on liitetty paikalliseen verkkoon. Varmista, että sinulla on yhteys samaan paikalliseen verkkoon matkapuhelimestasi tai tabletistasi, ja käynnistä Flexit GO -sovellus. Ota yhteys tuotteeseen asentajana (1000) ja siirry kohtaan Other > Installer > BACnet settings. Tällä voit muuttaa BACnet-asetuksia. Muutokset tulevat voimaan, kun käynnistät tuotteen uudelleen.

4. Lukee arvot yksiköstä / kirjoittaa arvot yksikköön

BACnet-objektit on lueteltu erillisessä dokumentissa, jonka nimi on "BACnet list"

Lue arvot:

Ei rajoituksia.

Kirjoita arvot:

Jos objektille on asetettu eri prioriteetteja, käytä vain **prio 13** -prioriteettia.



VAROITUS! Älä koskaan kirjoita muita kuin prioriteetin 13 alaisia arvoja. Jos kirjoitat, yksikkö ei ehkä enää ole hallinnassasi.



INFO! Ohjeet on jaettu viiteen eri kieleen lukujen 1–4 osalta. Siirry sivulle 9, jolla on luku 5.

1. About BACnet

BACnet (Building Automation and Controls network) was developed by the American Society of Heating, Refrigerating, and Air-Conditioning Engineers (ASHRAE). BACnet is an ISO global standard, American national standard, a European pre-standard, and is used in more than 30 countries.

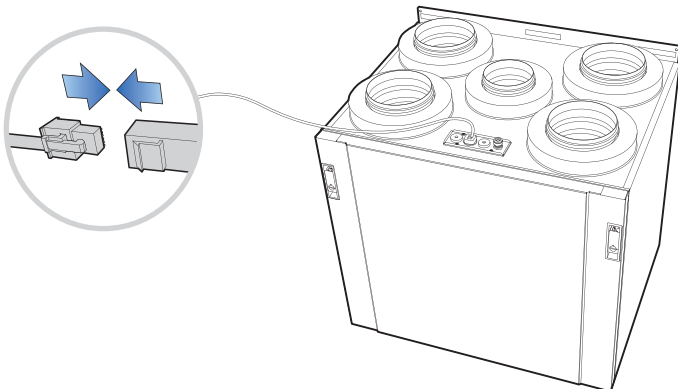
BACnet is a data communication protocol, or set of communication rules, that ASHRAE created in order to standardize communication between building automation system components.

BACnet allows systems from various vendors, such as HVAC, lighting, security and fire systems, to communicate with each other by providing standardized methods for presenting, requesting, interpreting, and transporting information.

Flexit Nordic and EcoNordic series are equipped with BACnet IP as standard.

| | |
|-----------------------------------|--|
| Date: | Mar. 03rd 2020 |
| Vendor name: | Siemens Building Products (Vendor ID 7) |
| Product name: | S300 |
| Product model number: | POS3.6715 |
| BACnet protocol version: | Revision1.14 |
| Application software version: | AAS-20:SU=SiUn;APT=HvacFnc-t21y_A;APTV=2.419 and above; 20:SU=SiUn;APT=HvacFnc-t21y_A;APTV=2.419 and above; |
| Firmware revision FW=03.39.02.25: | FW=03.39.02.25: BL=00.05.02.0003; SVS-300.4: SBC=13.24 |

2. Connecting to the unit



Connect the ethernet cable on top of the product to the network in the building.

3. Configuration

| Parameter | Default value |
|-----------|---------------|
| Device ID | 2 |

In order to change the BACnet settings, the product must be connected to a local network. Make sure you are connected to the same local network with your mobile / tablet and launch the Flexit GO app. Connect to the product as installer (1000) and navigate to Other> Installer> BACnet settings. From here you can change the BACnet settings. To apply the changes, the product restarts.

4. Read/write values to the unit

BACnet objects are listed in a separate document called "BACnet list"

Read values:

No restrictions.

Write values:

For objects that have priority arrays, only use **prio 13** to write.



CAUTION! Never write values in other priority than 13. Doing so may set the unit out of control.



INFO! The instruction is divided into five different languages for chapters 1-4. Now proceed to page 9 where you will find chapter 5.

5. BACnet standardized device profile (Annex L)

| | | |
|---|--|---------|
| | BACnet Advanced Workstation | (B-AWS) |
| | BACnet Operator Workstation | (B-OWS) |
| | BACnet Operator Display | (B-OD) |
| | BACnet Building Controller | (B-BC) |
| | BACnet Advanced Application Controller | (B-AAC) |
| x | BACnet Application Specific Controller | (B-ASC) |
| | BACnet Smart Sensor | (B-SS) |
| | BACnet Smart Actuator | (B-SA) |

6. BACnet interoperability building blocks supported (Annex K)

Data sharing

| | | |
|---|--|-----------|
| | Data Sharing – Read Property-A | DS-RP-A |
| x | Data Sharing – Read Property-B | DS-RP-B |
| | Data Sharing – Read Property Multiple-A | DS-RPM-A |
| x | Data Sharing – Read Property Multiple-B | DS-RPM-B |
| | Data Sharing – Write Property-A | DS-WP-A |
| x | Data Sharing – Write Property-B | DS-WP-B |
| | Data Sharing – Write Property Multiple-A | DS-WPM-A |
| x | Data Sharing – Write Property Multiple-B | DS-WPM-B |
| | Data Sharing – Change of Value -A | DS-COV-A |
| x | Data Sharing – Change of Value -B | DS-COV-B |
| | Data Sharing – Change of Value Property -A | DS-COVP-A |
| x | Data Sharing – Change of Value Property -B | DS-COVP-B |
| | Data Sharing – Change of Value-Unsolicited-A | DS-COVU-A |
| | Data Sharing – Change of Value-Unsolicited-B | DS-COVU-B |
| | Data Sharing – View-A | DS-V-A |
| | Data Sharing – Advanced View-A | DS-AV-A |
| | Data Sharing – Modify-A | DS-M-A |
| | Data Sharing – Advanced Modify-A | DS-AM-A |

Alarm and event management

| | | |
|--|---|-----------|
| | Alarm and Event – Notification-A | AE-N-A |
| | Alarm and Event – Notification Internal-B | AE-N-I-B |
| | Alarm and Event – Notification External-B | AE-N-E-B |
| | Alarm and Event – ACK-A | AE-ACK-A |
| | Alarm and Event – ACK-B | AE-ACK-B |
| | Alarm and Event – Alarm Summary-B | AE-ASUM-B |
| | Alarm and Event – Enrollment Summary-B | AE-ESUM-B |
| | Alarm and Event – Information-B | AE-INFO-B |
| | Alarm and Event – Life Safety-A | AE-LS-A |
| | Alarm and Event – Life Safety-B | AE-LS-B |
| | Alarm and Event – View Notifications-A | AE-VN-A |
| | Alarm and Event – Advanced View Notifications-A | AE-AVN-A |
| | Alarm and Event – View and Modify-A | AE-VM-A |
| | Alarm and Event – Advanced View and Modify-A | AE-AVM-A |
| | Alarm and Event – Alarm Summary View-A | AE-AS-A |

| Alarm and event management | |
|---|-----------|
| Alarm and Event – Event Log View-A | AE-ELV-A |
| Alarm and Event – Event Log View and Modify-A | AE-ELVM-A |
| Alarm and Event – Event Log Internal-B | AE-EL-I-B |
| Alarm and Event – Event Log Internal-B | AE-EL-E-B |
| Historical/Deprecated BIBBs | |
| Alarm and Event – Alarm Summary-A | AE-ASUM-A |
| Alarm and Event – Enrollment Summary-A | AE-ESUM-A |
| Alarm and Event – Information-A | AE-INFO-A |

| Scheduling | |
|---|--------------|
| Scheduling – Internal-B | SCHED-I-B |
| Scheduling – External-B | SCHED-E-B |
| Scheduling – Advanced View Modify-A | SCHED-AVM-A |
| Scheduling – View Modify-A | SCHED-VM-A |
| Scheduling – Weekly Schedule-A | SCHED-WS-A |
| x Scheduling – Weekly Schedule Internal-B | SCHED-WS-I-B |
| Scheduling – Readable-B | SCHED-R-B |
| Historical/Deprecated BIBBs | |
| Scheduling – A | SCHED-A |

| Trending | |
|--|------------|
| Trending – Viewing and Modifying Trends-A | T-VMT-A |
| Trending – Viewing and Modifying Internal-B | T-VMT-I-B |
| Trending – Viewing and Modifying External-B | T-VMT-E-B |
| Trending – Viewing and Modifying Multiple Values-A | T-VMMV-A |
| Trending – Viewing and Modifying Multiple Values Internal-B | T-VMMV-I-B |
| Trending – Viewing and Modifying Multiple Values External -B | T-VMMV-E-B |
| Trending – Automated Multiple Value Retrieval-A | T-AMVR-A |
| Trending – Automated Multiple Value Retrieval-B | T-AMVR-B |
| Trending – View-A | T-V-A |
| Trending – Advanced View and Modify-A | T-AVM-A |
| Trending – Archival-A | T-A-A |
| Trending – Automated Trend Retrieval-A | T-ATR-A |
| Trending – Automated Trend Retrieval-B | T-ATR-B |
| Historical/Deprecated BIBBs | |
| Trending – Viewing and Modifying Trends-A | T-VMT-A |
| Trending – Viewing and Modifying Multiple Values-A | T-VMMV-A |

| Device management | |
|--|----------|
| Device Management – Time Synchronization-A | DM-TS-A |
| x Device Management – Time Synchronization-B | DM-TS-B |
| Device Management – UTC Time Synchronization-A | DM-UTC-A |
| x Device Management – UTC Time Synchronization-B | DM-UTC-B |
| Device Management – Reinitialize Device-A | DM-RD-A |
| x Device Management – Reinitialize Device-B | DM-RD-B |
| Device Management – Backup and Restore-A | DM-BR-A |
| Device Management – Backup and Restore-B | DM-BR-B |
| Device Management – Restart-A | DM-R-A |
| Device Management – Restart-B | DM-R-B |

| Device management | | |
|--|--|----------|
| Device Management – List Manipulation-A | | DM-LM-A |
| Device Management – List Manipulation-B | | DM-LM-B |
| Device Management – Object Creation and Deletion-A | | DM-OCD-A |
| Device Management – Object Creation and Deletion-B | | DM-OCD-B |
| Device Management – Virtual Terminal-A | | DM-VT-A |
| Device Management – Virtual Terminal-B | | DM-VT-B |
| Device Management – Automatic Network Mapping-A | | DM-ANM-A |
| Device Management – Automatic Device Mapping-A | | DM-ADM-A |
| Device Management – Automatic Time Synchronization-A | | DM-ATS-A |
| Device Management – Manual Time Synchronization-A | | DM-MTS-A |

| Network management | | |
|---|--|---------|
| Network Management – Connection Establishment-A | | NM-CE-A |
| Network Management – Connection Establishment-B | | NM-CE-B |
| Network Management – Router Configuration-A | | NM-RC-A |
| Network Management – Router Configuration-B | | NM-RC-B |

7. Standard object types supported

| Object type | Supported | Can be created dynamically | Can be deleted dynamically |
|--------------------|-----------|----------------------------|----------------------------|
| Analog Input | x | | |
| Analog Output | x | | |
| Analog Value | x | | |
| Binary Input | x | | |
| Binary Output | x | | |
| Binary Value | x | | |
| Calendar | | | |
| Command | | | |
| Device | x | | |
| Event Enrollment | | | |
| File | | | |
| Group | | | |
| Loop | | | |
| Multi-State Input | | | |
| Multi-State Output | | | |
| Notification Class | | | |
| Program | | | |
| Schedule | x | | |
| Averaging | | | |
| Multi-State Value | x | | |
| Trend Log | | | |
| Life-Safety-Point | | | |
| Life-Safety-Zone | | | |
| Accumulator | | | |
| Pulse-Converter | | | |
| Event Log | | | |

| Object type | Supported | Can be created dynamically | Can be deleted dynamically |
|------------------------|-----------|----------------------------|----------------------------|
| Global Group | | | |
| Trend Log Multiple | | | |
| Load Control | | | |
| Structured-View | x | | |
| Access Door | | | |
| (unassigned) | | | |
| Access Credential | | | |
| Access Point | | | |
| Access Rights | | | |
| Access User | | | |
| Access Zone | | | |
| Credential Data Input | | | |
| Network Security | | | |
| Bitstring Value | | | |
| Characterstring Value | | | |
| Date Pattern Value | | | |
| Date Value | | | |
| Datetime Pattern Value | | | |
| Datetime Value | | | |
| Integer Value | | | |
| Large Analog Value | | | |
| Octetstring Value | | | |
| Positive Integer Value | x | | |
| Time Pattern Value | | | |
| Time Value | | | |

Analog Input

| Properties | Supported | Readable/ Writable | Range restrictions |
|--------------------|-----------|-----------------------|-----------------------|
| Object_Identifier | x | R | |
| Object_Name | x | W | |
| Object_Type | x | R | |
| Present_Value | x | R | |
| Description | x | W | |
| Device_Type | x | R | |
| Status_Flags | x | R | |
| Event_State | x | R | |
| Reliability | x | R | |
| Out_Of_Service | x | W | |
| Update_Interval | | | |
| Units | x | W | |
| Min_Pres_Value | x | W | |
| Max_Pres_Value | x | W | |
| Resolution | x | W | |
| COV_Increment | x | W | |
| Time_Delay | | | |
| Notification_Class | | | |
| High_Limit | | | |
| Low_Limit | | | |
| Deadband | | | |
| Limit_Enable | | | |
| Event_Enable | | | |
| Acked_Transitions | | | |
| Notify_Type | | | |
| Event_Time_Stamps | | | |
| Profile_Name | x | R | |
| Property_List | | | |

Analog Output

| Properties | Supported | Readable/ Writable | Range restrictions |
|--------------------|-----------|-----------------------|-----------------------|
| Object_Identifier | x | R | |
| Object_Name | x | W | |
| Object_Type | x | R | |
| Present_Value | x | W | |
| Description | x | W | |
| Device_Type | x | R | |
| Status_Flags | x | R | |
| Event_State | x | R | |
| Reliability | x | R | |
| Out_Of_Service | x | W | |
| Units | x | W | |
| Min_Pres_Value | x | W | |
| Max_Pres_Value | x | W | |
| Resolution | x | W | |
| Priority_Array | x | R | |
| Relinquish_Default | x | W | |
| COV_Increment | x | W | |
| Time_Delay | | | |
| Notification_Class | | | |
| High_Limit | | | |
| Low_Limit | | | |
| Deadband | | | |
| Limit_Enable | | | |
| Event_Enable | | | |
| Acked_Transitions | | | |
| Notify_Type | | | |
| Event_Time_Stamps | | | |
| Profile_Name | x | R | |
| Property_List | | | |

Analog Value

| Properties | Supported | Readable/ Writable | Range restrictions |
|--------------------|-----------|-----------------------|-----------------------|
| Object_Identifier | x | R | |
| Object_Name | x | W | |
| Object_Type | x | R | |
| Present_Value | x | W | |
| Description | x | W | |
| Status_Flags | x | R | |
| Event_State | x | R | |
| Reliability | x | R | |
| Out_Of_Service | x | W | |
| Units | x | W | |
| Priority_Array | x | R | |
| Relinquish_Default | x | W | |
| COV_Increment | x | W | |
| Time_Delay | | | |
| Notification_Class | | | |
| High_Limit | | | |
| Low_Limit | | | |
| Deadband | | | |
| Limit_Enable | | | |
| Event_Enable | | | |
| Acked_Transitions | | | |
| Notify_Type | | | |
| Event_Time_Stamps | | | |
| Profile_Name | x | R | |
| Resolution | x | W | |
| Property_List | | | |

Binary Input

| Properties | Supported | Readable/ Writable | Range restrictions |
|---------------------------|-----------|-----------------------|-----------------------|
| Object_Identifier | x | R | |
| Object_Name | x | W | |
| Object_Type | x | R | |
| Present_Value | x | R | |
| Description | x | W | |
| Device_Type | x | R | |
| Status_Flags | x | R | |
| Event_State | x | R | |
| Reliability | x | R | |
| Out_Of_Service | x | W | |
| Polarity | x | W | |
| Inactive_Text | x | W | |
| Active_Text | x | W | |
| Change_Of_State_Time | | | |
| Change_Of_State_Count | | | |
| Time_Of_State_Count_Reset | | | |
| Elapsed_Active_Time | | | |
| Time_Of_Active_Time_Reset | | | |
| Time_Delay | | | |
| Notification_Class | | | |
| Alarm_Value | | | |
| Event_Enable | | | |
| Acked_Transitions | | | |
| Notify_Type | | | |
| Event_Time_Stamps | | | |
| Profile_Name | x | R | |
| Property_List | | | |

Binary Output

| Properties | Supported | Readable/ Writable | Range restrictions |
|---------------------------|-----------|-----------------------|-----------------------|
| Object_Identifier | x | R | |
| Object_Name | x | W | |
| Object_Type | x | R | |
| Present_Value | x | W | |
| Description | x | W | |
| Device_Type | x | R | |
| Status_Flags | x | R | |
| Event_State | x | R | |
| Reliability | x | R | |
| Out_Of_Service | x | W | |
| Polarity | x | W | |
| Inactive_Text | x | W | |
| Active_Text | x | W | |
| Change_Of_State_Time | | | |
| Change_Of_State_Count | | | |
| Time_Of_State_Count_Reset | | | |
| Elapsed_Active_Time | | | |
| Time_Of_Active_Time_Reset | | | |
| Minimum_Off_Time | x | W | |
| Minimum_On_Time | x | W | |
| Priority_Array | x | R | |
| Relinquish_Default | x | W | |
| Time_Delay | | | |
| Notification_Class | | | |
| Feedback_Value | | | |
| Event_Enable | | | |
| Acked_Transitions | | | |
| Notify_Type | | | |
| Event_Time_Stamps | | | |
| Profile_Name | x | R | |
| Property_List | | | |

Binary Value

| Properties | Supported | Readable/ Writable | Range restrictions |
|---------------------------|-----------|-----------------------|-----------------------|
| Object_Identifier | x | R | |
| Object_Name | x | W | |
| Object_Type | x | R | |
| Present_Value | x | W | |
| Description | x | W | |
| Status_Flags | x | R | |
| Event_State | x | R | |
| Reliability | x | R | |
| Out_Of_Service | x | W | |
| Inactive_Text | x | W | |
| Active_Text | x | W | |
| Change_Of_State_Time | | | |
| Change_Of_State_Count | | | |
| Time_Of_State_Count_Reset | | | |
| Elapsed_Active_Time | | | |
| Time_Of_Active_Time_Reset | | | |
| Minimum_Off_Time | x | W | |
| Minimum_On_Time | x | W | |
| Priority_Array | x | R | |
| Relinquish_Default | x | W | |
| Time_Delay | | | |
| Notification_Class | | | |
| Alarm_Value | | | |
| Event_Enable | | | |
| Acked_Transitions | | | |
| Notify_Type | | | |
| Event_Time_Stamps | | | |
| Profile_Name | x | R | |
| Property_List | | | |

Device

| Properties | Supported | Readable/ Writable | Range restrictions |
|---------------------------------|-----------|-----------------------|-----------------------|
| Object_Identifier | x | R | |
| Object_Name | x | R | |
| Object_Type | x | R | |
| System_Status | x | R | |
| Vendor_Name | x | R | |
| Vendor_Identifier | x | R | |
| Model_Name | x | R | |
| Firmware_Revision | x | R | |
| Application_Software_Version | x | R | |
| Location | x | W | |
| Description | x | W | |
| Protocol_Version | x | R | |
| Protocol_Revision | x | R | |
| Protocol_Services_Supported | x | R | |
| Protocol_Object_Types_Supported | x | R | |
| Object_List | x | R | |
| Structured_Object_List | x | R | |
| Max_APDU_Length_Accepted | x | R | |
| Segmentation_Supported | x | R | |
| Max_Segments_Accepted | x | R | |
| VT_Classes_Supported | | | |
| Active_VT_Sessions | | | |
| Local_Time | x | W | |
| Local_Date | x | W | |
| UTC_Offset | x | R | |
| Daylight_Savings_Status | x | R | |
| APDU_Segment_Timeout | x | R | |
| APDU_Timeout | x | R | |
| Number_Of_APDU_Retries | x | R | |
| List_Of_Session_Keys | | | |
| Time_Synchronization_Recipients | | | |
| Max_Master | x | R | |
| Max_Info_Frames | x | R | |
| Device_Address_Binding | x | R | |
| Database_Revision | x | R | |
| Configuration_Files | | | |
| Last_Restore_Time | | | |
| Backup_Failure_Timeout | | | |
| Backup_Preparation_Time | | | |
| Restore_Preparation_Time | | | |
| Restore_Completion_Time | | | |
| Backup_And_Restore_State | | | |
| Active_COV_Subscriptions | x | R | |
| Slave_Proxy_Enable | | | |
| Manual_Slave_Adress_Binding | | | |
| Auto_Slave_Discovery | | | |

| Properties | Supported | Readable/ Writable | Range restrictions |
|-------------------------------------|-----------|-----------------------|-----------------------|
| Slave_Address_Binding | | | |
| Last_Restart_Reason | X | R | |
| Time_Of_Device_Restart | X | R | |
| Restart_Notification_Recipients | X | R | |
| UTC_Time_Synchronization_Recipients | | | |
| Time_Synchronization_Interval | | | |
| Align_Intervals | | | |
| Interval_Offset | | | |
| Profile_Name | X | R | |
| Property_List | | | |

Multistate Value

| Properties | Supported | Readable/ Writable | Range restrictions |
|--------------------|-----------|-----------------------|-----------------------|
| Object_Identifier | x | R | |
| Object_Name | x | W | |
| Object_Type | x | R | |
| Present_Value | x | W | |
| Description | x | W | |
| Status_Flags | x | R | |
| Event_State | x | R | |
| Reliability | x | R | |
| Out_Of_Service | x | W | |
| Number_Of_States | x | R | |
| State_Text | x | R | |
| Priority_Array | x | R | |
| Relinquish_Default | x | W | |
| Time_Delay | | | |
| Notification_Class | | | |
| Alarm_Values | | | |
| Fault_Values | | | |
| Event_Enable | | | |
| Acked_Transitions | | | |
| Notify_Type | | | |
| Event_Time_Stamps | | | |
| Profile_Name | x | R | |
| Property_List | | | |

Structure View Object

| Properties | Supported | Readable/ Writable | Range restrictions |
|-------------------------|-----------|-----------------------|-----------------------|
| Object_Identifier | x | R | |
| Object_Name | x | W | |
| Object_Type | x | R | |
| Node_Type | x | R | |
| Description | x | W | |
| Subordinate_List | x | R | |
| Profile_Name | x | R | |
| Node_Subtype | x | R | |
| Subordinate_Annotations | x | R | |
| Property_List | | | |

Positive integer value Object

| Properties | Supported | Readable/ Writable | Range restrictions |
|--------------------|-----------|-----------------------|-----------------------|
| Object_Identifier | x | R | |
| Object_Name | x | W | |
| Object_Type | x | R | |
| Present_Value | x | W | |
| Description | x | W | |
| Status_Flags | x | R | |
| Event_State | x | R | |
| Reliability | x | R | |
| Out_Of_Service | x | W | |
| Units | x | W | |
| Relinquish_Default | | | |
| COV_Increment | x | W | |
| Time_Delay | | | |
| Notification_Class | | | |
| High_Limit | | | |
| Low_Limit | | | |
| Deadband | | | |
| Limit_Enable | | | |
| Event_Enable | | | |
| Acked_Transitions | | | |
| Notify_Type | | | |
| Event_Time_Stamps | | | |
| Profile_Name | x | R | |
| Resolution | | | |
| Min_Pres_Value | x | W | |
| Max_Pres_Value | x | W | |
| Property_List | | | |

8. Segmentation capability

| | | |
|---|-------------------------------------|---------------|
| x | Able to transmit segmented messages | Window size 4 |
| x | Able to receive segmented messages | Window size 4 |

9. Data Link Layer options

The simultaneously supported Data Link Layers of a product are listed with the product model number.

| | | |
|---|--|--|
| x | BACnet IP, (Annex J) | |
| | BACnet IP, (Annex J), Foreign Device | |
| | ISO 8802-3, Ethernet (Clause 7) | |
| | ANSI/ATA 878.1, 2.5 Mb. ARCNET (Clause 8) | |
| | ANSI/ATA 878.1, RS-485 ARCNET (Clause 8), baud rate(s) | |
| | MS/TP master (Clause 9), baud rate(s) | : 9600 : 19200 : 38400 : 57600 : 76800 : 115200 |
| | MS/TP slave (Clause 9), baud rate(s) | : 9600 : 19200 : 38400 : 57600 : 76800 : 115200 |
| | Point-To-Point, EIA 232 (Clause 10), baud rate(s) | : 38400 |
| | Point-To-Point, modem, (Clause 10), baud rate(s) | : 38400 |
| | LonTalk, (Clause 11), medium | : TP/FT-10 |
| | Other | |

10. Device address binding

| | Yes | No |
|-------------------------------------|-----|----|
| Is static device binding supported? | | x |

11. Networking options

| | Yes | No |
|--|-----|----|
| Router, Clause 6 (remote management functionality/BACnet PTP) | | |
| Annex H, BACnet Tunnelling Router over IP | | |
| BACnet/IP Broadcast Management Device (BBMD) Number of BDT entries: Number of FDT entries: | | |
| Does the BBMD support registrations by foreign devices? | | |

12. Character sets supported

Indicating support for multiple character sets does not imply that they can all be supported simultaneously.

| | | | |
|---|----------------------|----------------------|------------|
| x | UTF-8 (or ANSI X3.4) | IBM / Microsoft DBCS | ISO 8859-1 |
| | ISO 10646 (UCS-2) | ISO 10646 (UCS-4) | JIS C 6226 |



Flexit AS, Televeien 15, N-1870 Ørje
www.flexit.no