

112626E-02
2012-09

CS2000 Automatic control V2



E Quick Guide

Content



This quick guide only applies to software version V2.x

To view current software version:

Start page > Main menu > System Overview > Versions > Flexit.ahu = V2.x

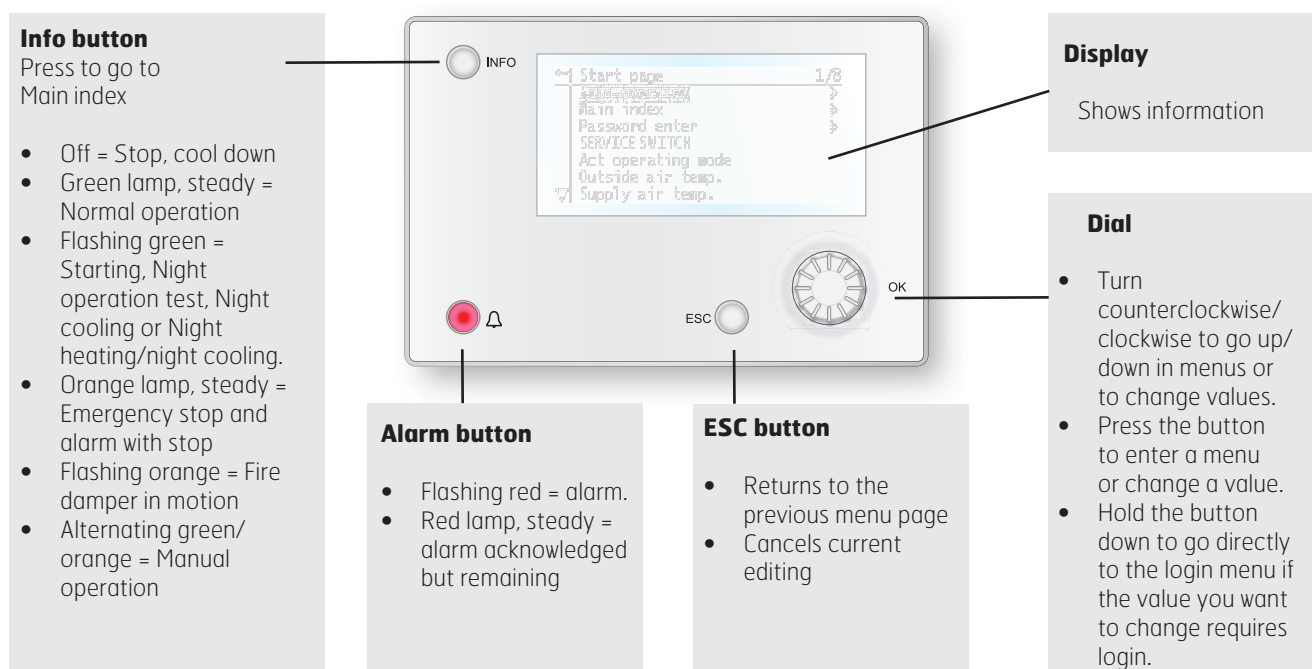
1. HMI	3
2. Settings	3
2.1. Introduction	3
2.2. Select language	3
2.3. Set Time/Date	3
2.4. Log in	3
3. Adjust setpoints	4
3.1. Temperatures/Air flow	4
4. Select method of regulation	4
4.1. Extract air regulation	4
5. Operating modes	4
6. Set the calendar and timing program	5
6.1. General	5
6.2. Week schedule	5
6.3. Day schedule	5
6.4. Calendar (exceptions and stop)	6
7. Alarm handling	7



All electrical connections must be carried out by qualified electricians.

1. HMI

A central element in the system is the HMI (control panel), where you can adjust settings and take readings. The control panel consists of an 8-line graphic display, indicator lamps and controls for the settings. Here is a short introduction to the control panel showing how to enter the initial settings in the system.



2. Settings

2.1. Introduction

The first time the system is started, you need to go through some simple steps to ensure that the system will function.

If a heating coil has been installed in the ventilation unit and the associated settings have been made with dipswitches in the switching space in the unit, the automatic control system will be restarted automatically once to complete the operation. No extra action needs to be taken. It is simply necessary to wait until the system has restarted.

Then go through the following steps:

2.2. Select language

Five languages are supported in the system:

- English
- Norwegian
- Swedish
- Danish
- Finnish

English is selected as the factory setting. In order to change the language, authority level 2 at least is required (password 1000). The menu option for making the change is:

Main index > System overview > Language selection

2.3. Set Time/Date

To change the time and date, go to the menu option:

Main index > System overview

2.4. Login

In order to make changes to the system, it is normally necessary to log in. There are four authority levels in the system, and three of them are password protected. The level at which the user is currently logged in is shown by the number of keys in the top left hand corner of the display. The menus show more options or fewer, depending on the level at which you are logged in.

The following actions are possible at the different levels:

Level 1: No restrictions, no password required.

- Read rights to all menus except system parameters, configuration and detail menus.
- Read rights to alarm lists and alarm history.

Level 2: End user, password 1000.

- All rights as for level 1, plus:
- Read rights to all menus except configuration menus.
- Write rights to the most important setpoints (Setpoints/Settings > Setpoints).
- Alarms and alarm history can be acknowledged and reset.

Level 3: System administrator, password 2000.

- All rights as for level 2, plus:
- Rights to all menus except I/O configuration and system settings.

Level 4: OEM, password given only in consultation with the Flexit service organisation.

- All rights as for level 3, plus:
- Rights to all menus and system settings.

You can change the standard password to your own password. At least authority level 3 is required. The menu option required is:

Main index > System overview > Password handling

3. Adjust setpoints

3.1. Temperatures/Air flow

The menu option for adjusting temperature setpoints and air flow is:

Main index > Unit > Setpoints/Settings

Temperature setpoints can be changed on lines three and four. Air flow values can be changed on lines five to ten. The default configuration in the unit is for constant air flow regulation.

4. Select method of regulation

4.1. Extract air regulation

Limits the supply air temperature in connection with pure room or extract air regulation so that sudden fluctuations are avoided when temperatures are too high or too low.



NB! Room regulation requires the installation of special room sensors

Setpoints		
All settings		>
Timing program	Ec. St1	>
Setp. comf. heat	20 °C	
Setp. econ. heat	18 °C	
Setp. TF step 1	100 l/s	
Setp. TF step 2	300 l/s	
Setp. TF step 3	500 l/s	
Setp. FF step 1	100 l/s	
Setp. FF step 2	300 l/s	
Setp. FF step 3	500 l/s	

Activate the function on the menu selection:

Main index > Configuration > Configuration 1 > Temp. control mode = Room or Exhaust



Set parameters in the menu selection:

Main index > Unit > Temp control > Min/Max supply air regulation

5. Operating modes

The system can be set to run in various operating modes, and there are two alternative menu options that will lead to the required line on the menu:

Start page > Manual operation

Main index > Unit > Operating mode > Manual operation

OFF	The unit is switched off.
AUTO	The unit is running in automatic mode and controlled according to the means of regulation and priorities that have been set
Temp. Fan	A number of different manual operating modes in which temperature and fan mode are combined freely, for example Comf.St2

6. Set the calendar and timing program

6.1. General

This section describes functions and settings for the timing program and calendars.

When no object with higher priority (for example Manual operation <-> Auto) is activated, the system can be disconnected or the stages altered from the timing program. A maximum of six switch-over times can be specified per week.

The calendar stop overrides the calendar exception, which in turn overrides the normal timing program (only in operating mode). Up to 10 periods or exception days can be specified for each calendar.

NB! Both setpoints for fan steps and temperature setpoints (comfort /economy) are controlled by the timing program.

6.2. Week schedule

Parameter	Value	Function
Current value	---	Switching according to schedule.
Monday		Shows current command when the current day is Monday. The latest time that can be entered for a day is 23:59. Go to the day switching schedule for Mondays.
Copy schedule	– Mon to – Tu– Fr	Copy times for the timing program from Monday to Tuesday–Friday. – Passive (no copying). – Copying starts. Return to the display screen.
Tuesday		Same function as for Monday.
...		...
Sunday		Same function as for Monday.
Exception		Shows current command when the current day is an exception day. Go to the day switching schedule for exception days.
Period: Start Period:Start		(Only Authority level 3.) Start date for week schedule. *;*:00 means that the week schedule is always activated. ---> Activate week schedule.
Period: End Period:Start		(Only Authority level 3.) Start date and start time for inactivating week schedule.

6.3. Day schedule

Parameter	Value	Function
Current value	---	Switching according to the schedule when the current weekday is the same as the switching day.
Day schedule	– Passive – Active	Status for current week or exception day: – Current weekday (system day) is not the same as the switching day. – Current weekday (system day) is the same as the switching day.
Time-1		Special case: This time must not be changed, and must always be 00:00.
Value-1		Switching command for Time-1.
Time-2		Switching time 2. *:* ---> Time inactivated.
Value-2 ... Value-6		Analogue value 1.
Time-3 ... Time-6		Analogue time 2.

6.4. Calendar (exceptions and stop)

Exception days can be defined in the calendar. These can include specific days, periods or weekdays. Exception days override the weekly schedule.

Calendar exceptions

Switching follows the weekly schedule and the exceptions specified in the day schedule when a switching time is activated in the calendar exception.

Calendar stops

The system is turned off when the calendar stop is activated.

Parameter

Main index > Unit > Main overview > Time switch program > Calendar exceptions

Main index > Unit > Main overview > Time switch program > Calendar fix off

Parameter	Value	Function
Current value	<ul style="list-style-type: none"> – Passive – Active 	Shows whether a calendar time is activated: <ul style="list-style-type: none"> – No calendar time activated. – Calendar time activated.
Val-x	<ul style="list-style-type: none"> – Date – Interval – Weekday – Passive 	Specification of exception type: <ul style="list-style-type: none"> – A certain day (e.g. Friday). – A period (e.g. holiday). – A certain weekday. – Times are inactivated. This value must always be placed last, after the date.
-(Start) Date		<ul style="list-style-type: none"> – Val-x = interval: Enter the start date for the period. – (Val-x = date: Enter specific date.)
-End date		Val-x = interval: Enter the end date for the period. The end date must be later than the start date.
-Weekday		Val-x = only weekdays: Enter a weekday.

EXAMPLE: Val-x = Date

Only the time for (start) is relevant.

- `-(Start)Date = *,01.01.09`

Result: 1 January 2009 is an exception date.

- `-(Start)Date = Mo,*.00`

Every Monday is an exception day

- `-(Start)Date = *,*.Even.00`

All days in even months (February, April, June, August, etc.) are exception days.

EXAMPLE: Val-1 = Interval

The times for (Start)Date and End date are adjusted.

- `-(Start)Date = *,23.06.09 / -End date = *,12.07.09.`

23 June 2009 until end of 12 July 2009 are exception days (for example holidays).

- `-(Start)Date = *,23.12.00 / -End date = *,31.12.00`

23–31 December are exception days every year. Time End date = *,01.01.00 will not work, because 1 January comes before 23 December.

- `-(Start)Date = *,23.12.09 / -End date = *,01.01.10.`

23 December 2009 up to and including 1 January 2010 are exception days.

- `-(Start)Date = *,*.00 / -End date = *,*.00`

Warning! This means that the exception is always active! The system is constantly in exception mode or turned off.

EXAMPLE: Val-1 = Weekday

Val-1 = Weekday

The times for weekdays are adjusted.

- `Weekday = *,Fr,*`

Every Friday is an exception day.

- `Weekday = *,Fr,Even`

Every Friday in even months (February, April, June, August, etc.) is an exception day.

- `Weekday = *,*,*`

Warning! This means that the exception is always active! The system is constantly in exception mode or turned off.

7. Alarm handling

If an alarm has been triggered, it will be shown by the flashing alarm symbol. You can get more information by pressing the alarm button. To reset the alarm, press the alarm button twice and select Confirm/Reset and then Execute in the menu.

Alternatively, the alarm can be reset with the menu option:

Main index > Alarm handling

Then select Alarm Reset and Execute



Flexit AS, Televeien 15, N-1870 Ørje www.flexit.no